



Website: www.tep-co.co



TEP

Tajhiz Energy Paidar

Engineering & Procurement

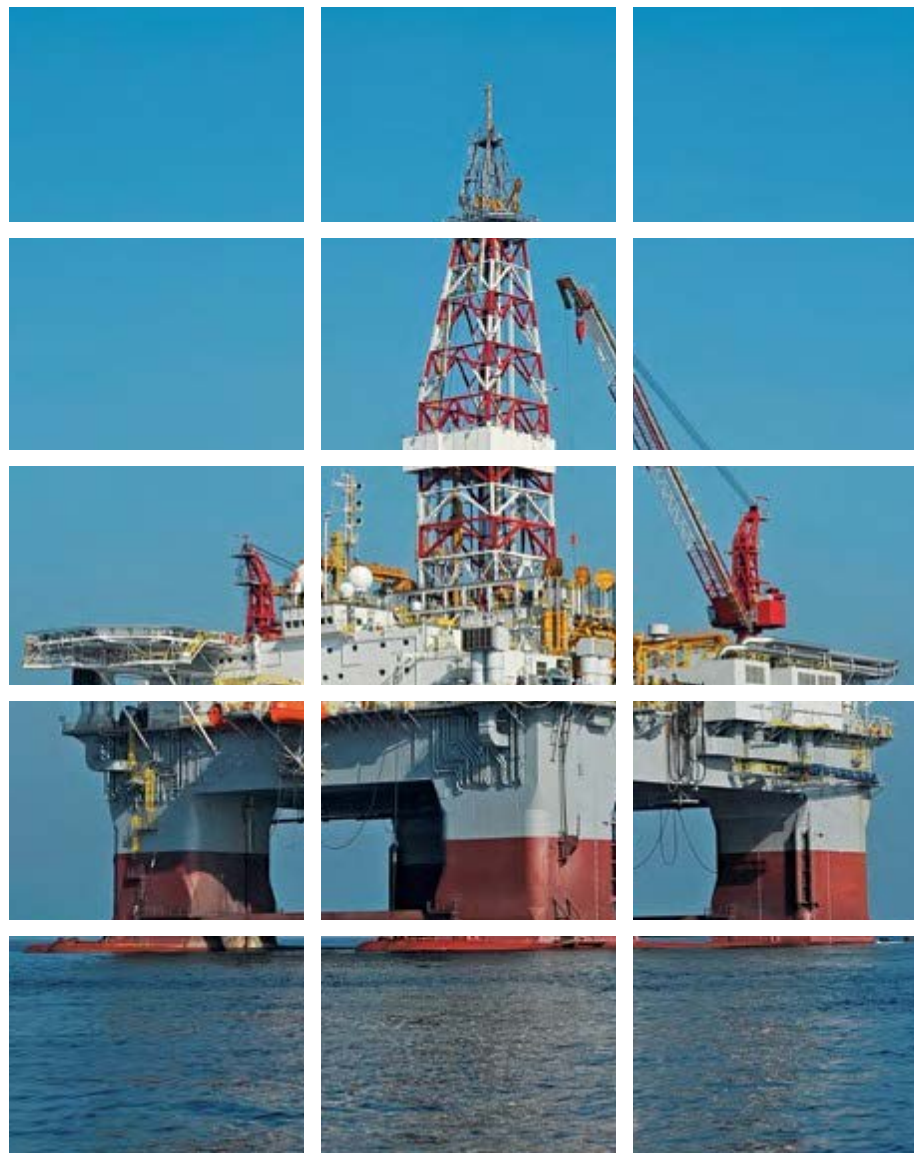
Oil & Gas , Petrochemical , Power plant , Steel industries

CONTENTS

1	About	5
2	Quality	6
3	BUTTWELD FITTINGS	7
4	Forge Fittings	8
5	Valves	9
6	Pipes	10
7	INSTRUMENTATION	11
8	Flanges	12
9	GASKETS	13
10	FIRE FIGHTING	14
11	FASTENERS	15
12	SHEET / PLATES / COILS	16
13	STRUCTURAL STEEL	17
14	Contact Us	20

Website: www.tep-co.co

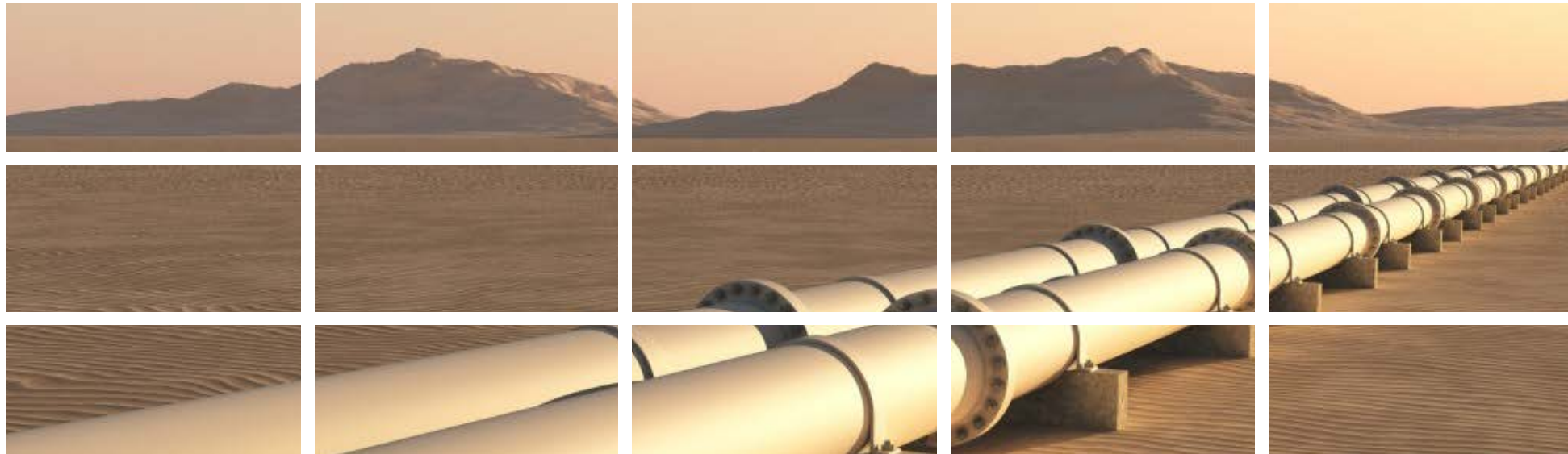
TEP.CO



TAJHIZ ENERGY PAYDAR (TEPCO) initially name as **AHAN TEHRAN** was founded in the year of 1973 to meet the industrial requirements. With taking advantage of the knowledge and expertise of our engineers our company could achieved valued experience in the field of procurement and supplying industrial equipment for the areas of oil, gas, petrochemicals, fire-fighting, mining and construction from outstanding world manufacturer.

It should be mentioned that having stores in Iranian industrial market is helping us to find if the goods are available in the internal market or not.

All of the above make us the premier supplier for solutions to your industrial requirements.



The quality in **TEP-CO**

Quality is the cornerstone of our company's philosophy and a key to our competitiveness.

We are responsible to talk to customers by standard language and representing them reliable documents and certificates in accordance of the goods and their desire.

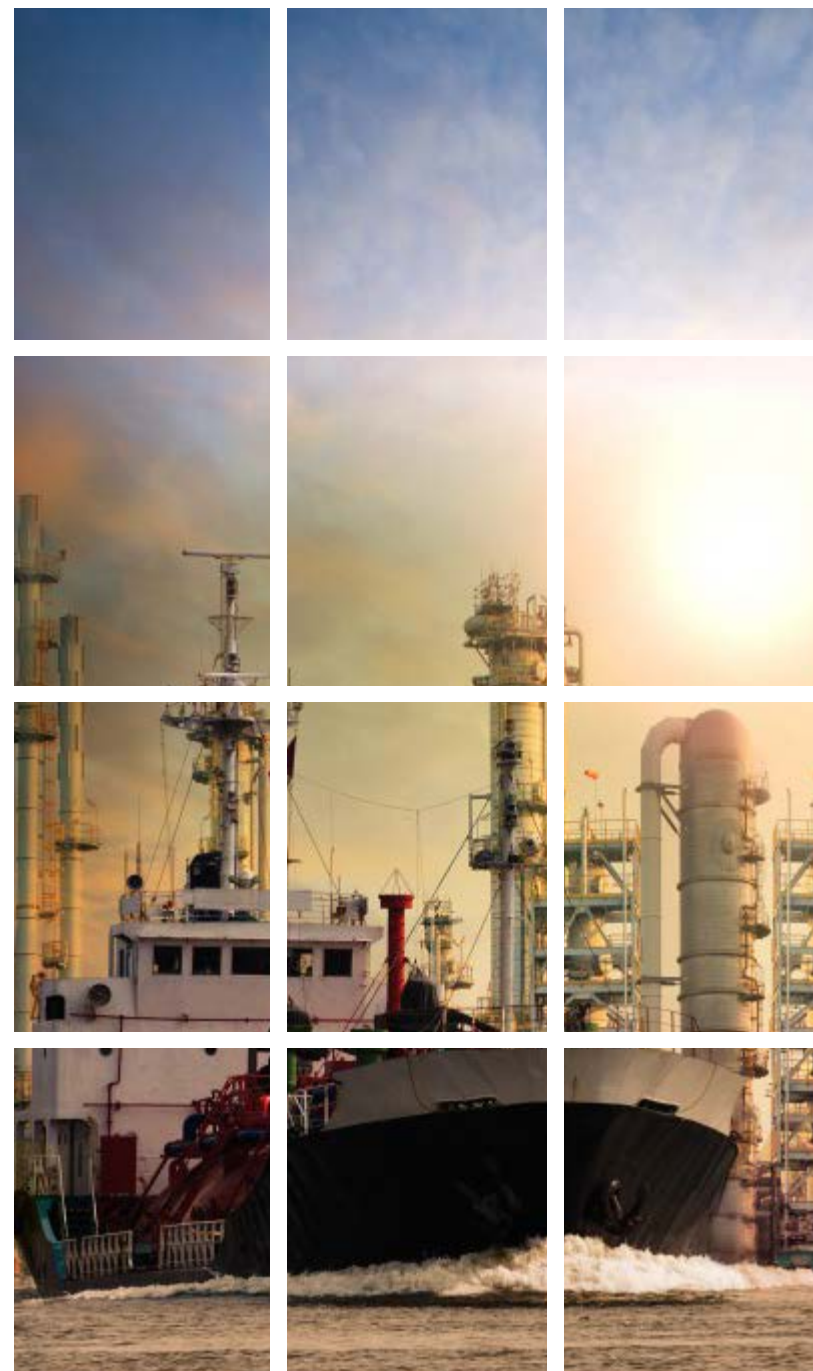
Besides, we pay much attention to the highest quality, lowest final price and most suitable time according to the project dead line to make the customer satisfied.

We are able to offer competitive proposals from all well-known manufactures in local and foreign places.

Since we are importing goods from many outstanding foreign manufacturer, we have developed our quality management system to meet the ever-changing market demands as well as client needs providing new solutions jointly with our engineering department and manufacture teams.

The quality is one the most important aspects of our company.

TEP.CO



BUTTWELD FITTINGS

Stainless Steel ASTM A403 Gr. WP304, WP316-WP321, WP347

Carbon Steel ASTM A234 Gr. WPB, WPA, WPC

Alloy Steel ASTM A420 Gr. WPL3, WPL6. ASTM234 Gr. WP1, WP11, WP12, WP22, WP5, WP9

Size 1/2" tO 24" (seamless) 2" tO 72" (welded)

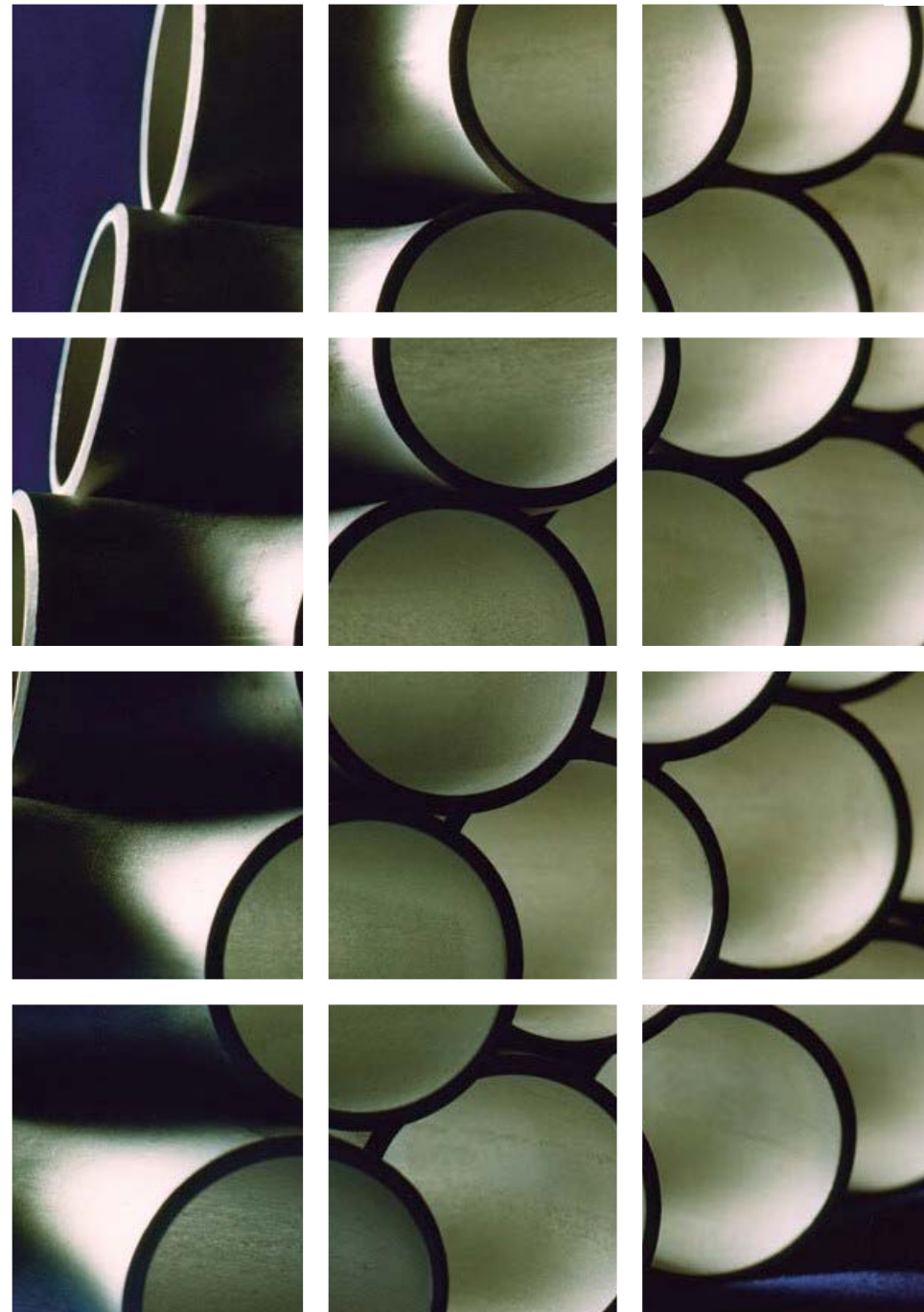
Wall Thickness Sch. 10 to Sch. XXS & Sch. 5s to 80s

TYPE OF BUTTWELD FITTINGS

TEE - REDUCING TEE - RETURN BENDS -

ELBOW (1D/1.5D/3D/5D) REDUCER (CONCENTRIC/ECCENTRIC)

- MITER BENDS - CAP



FORGE FITTINGS

Stainless Steel: ASTM A182, F304, 304L, 316, 316L, 321, 310, 347, 904L

Carbon Steel : ASTM A105

Alloy Steel: ASTM A182 F1, F5, F9, F11, F22, & ASTM A350 Gr. LF2 Gr. LF3

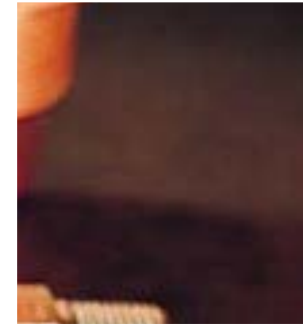
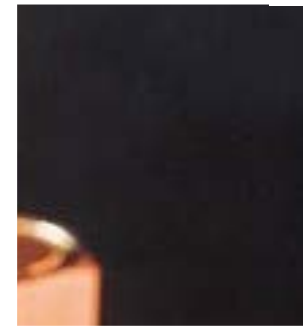
Size: 1/8" To 4"

Class: 3000#, 6000#, 9000#

TYPE OF FORGE FITTINGS

ELBOW 90°, ELBOW 45°, TEE, CROSS, STREET ELBOW, UNION, COUPLING, HALF COUPLING, REDUCING COUPLING, CAP,

45° BRANCH OUTLET, HEX & HEAD BUSHING, HEX & HEAD PLUG, SQUARE HEAD PLUG, ROUND HEAD PLUG, BULL PLUG, BOSS, OUTLET, HEX NIPPLE, SWAGE NIPPLE



VALVE

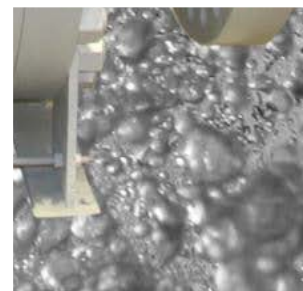
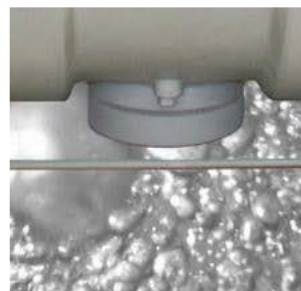
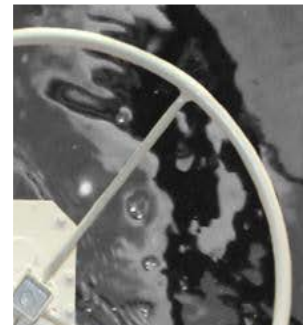
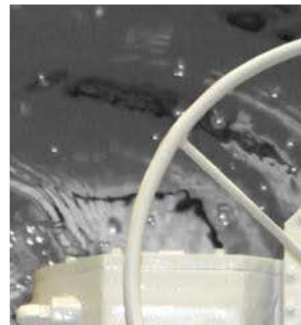
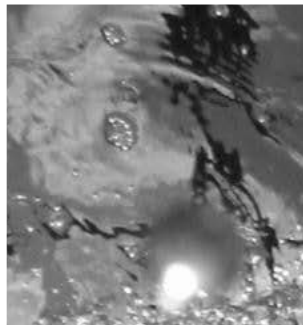
Material: Carbon Steel, Stainless Steel, Alloy Steel,

Standards: in Accordance to API , BS , DIN , ASME

Sizes: 1/2" to 72"

TYPE OF VALVE

Ball Valves, Gate Valves, Globe Valves, Check Valves, Butterfly Valves,
Line break Valves, Safety relief , valves, Choke Valves, Pinch Valve,
Knife gate Valve, Needle Valves, Control Valves & Actuators

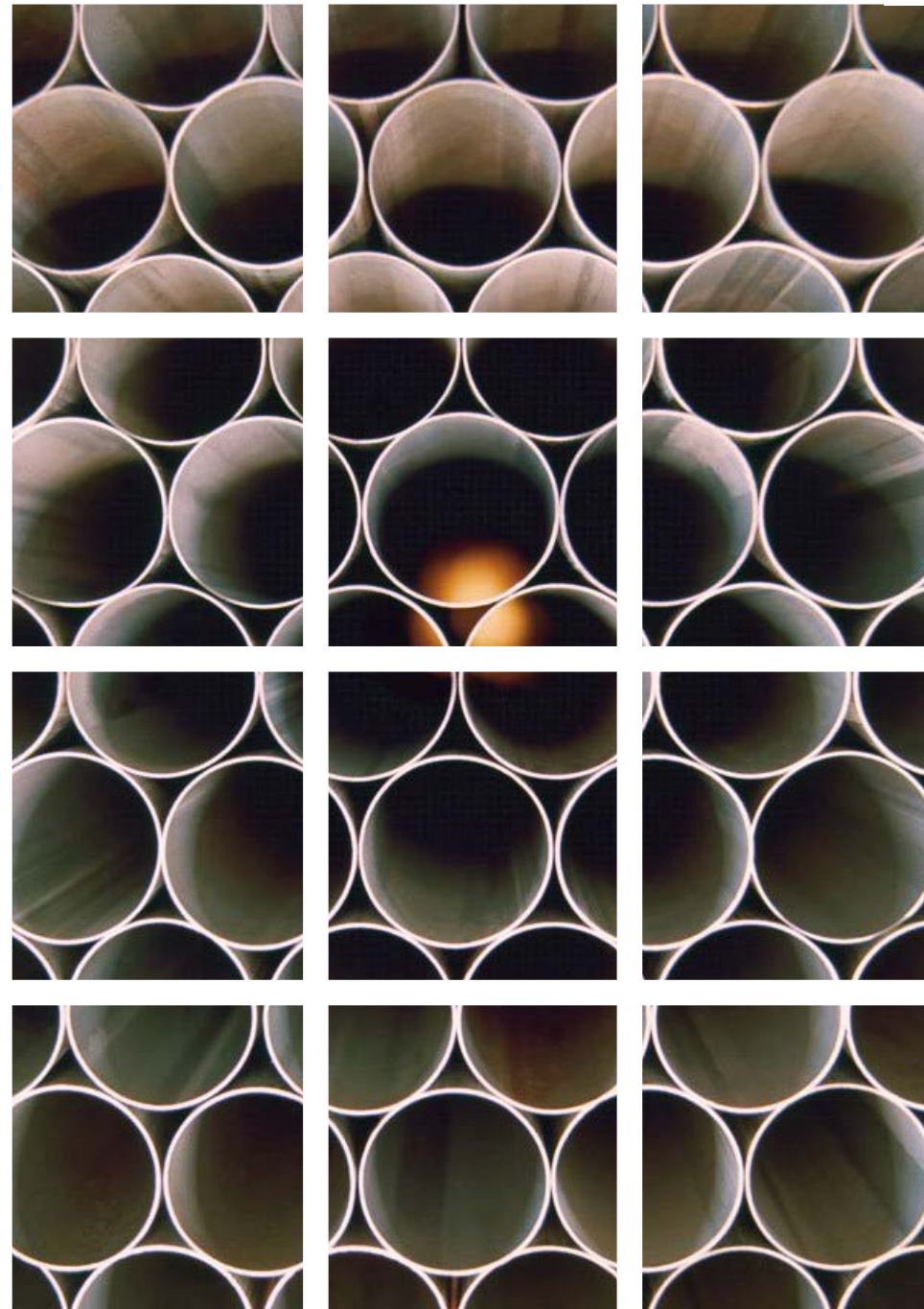


PIPES

Sizes : 1/2" to 84"
Schedules : SCH 10 to SCH XXS
 or Higher as per customer requirements.

Material Grades

A106 Gr.BA53 Gr.BAPI 5L Gr.B, A333 Gr.3 & Gr.6, A312 TP304, 304L, TP316, 316L, F321, API 5L X42 upto X80 PSL1& PSL2 , A335, P5, P11, P22.



INSTRUMENTATION

- Temperature Instrumentation
- Flow Instrumentation
- Level Instrumentation
- Pressure Instrumentation
- Industrial Recorder
- Transducers
- Calibrator Instrumentation
- Analytical Instrumentation
- Force And Weight Instrumentation
- Distance Instrumentation

AUTOMATION

Controllers / Sensors / Motors and Drives / Indicators & HMI / Fieldbus

TEST

Inspection Test / Electrical Test / Color Test / Environmental / Analyzer



FLANGES

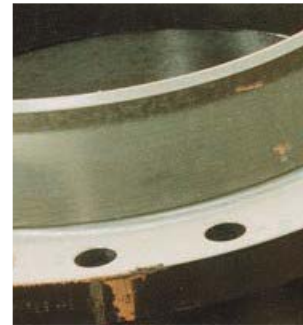
Stainless Steel: ASTM A182, F304, 304L, 316, 316L, 321, 310, 347, 904L

Carbon Steel : ASTM A105

Alloy Steel: ASTM A182 F1, F5, F9, F11, F22, & ASTM A350 Gr. LF2, Gr. LF3

Size: 1/2" To 72"

Class: 150#, 300#, 600#, 900#, 1500#, 2500#



TYPE OF FLANGES

LAP JOINT FLANGE / WELD NECK FLANGE / ORIFICE FLANGE /
LONG WELD NECK FLANGE / SCREWED FLANGE / SOCKET WELD FLANGE /
BLIND FLANGE / RTJ FLANGE / THREADED FLANGE

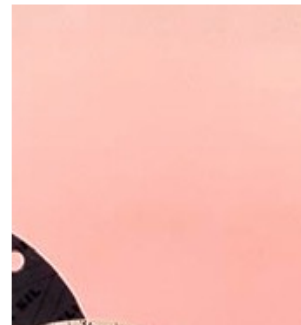
GASKETS

Metallic

- Ring Joints Gaskets
- R-type Ring joint Gaskets
- RX type Ring joint Gaskets
- BX type Ring joint Gaskets
- SRX & BX type Ring joint Gaskets

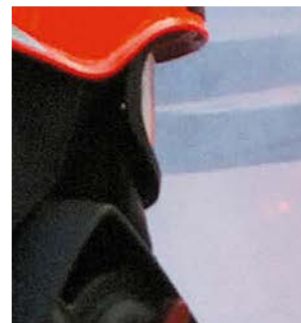
Semi- Metallic Gaskets

- Spiral Wound Gaskets
- Metal Jacketed Gaskets
- Corrugated Metal Gaskets
- Camprofile (Grooved) Gaskets
- PTFE Gaskets



FIRE FIGHTING

- Personal Protective Equipment
- Respiratory Protection
- Hazmat & Decontamination Equipment
- Monitoring Equipment
- Fire Hoses, Couplings, Fittings, Nozzles
- Fire Suppression, UHPS, Portable Fire Pumps
- Power Generators, Electrical Equipment
- Alarm And Warning Equipment
- High Performance Fans, Technical Equipment
- Hydraulic Rescue Tools, Lifting Bags
- Rescue And First Aid Equipment
- Fire Station Equipment



FASTENERS

- Material:** Carbon Steel, Stainless Steel, Alloy Steel,
Standard: DIN, ASTM
Material Grades: Gr. 5.8, 8.8, 9.8, 10.9, 12.9 & B7/2H, B8/B8M, L7
Coating: PTFE, Fluorocarbon coated, Galvanize



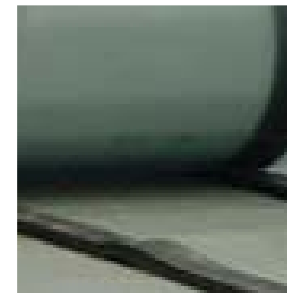
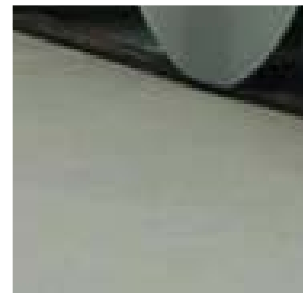
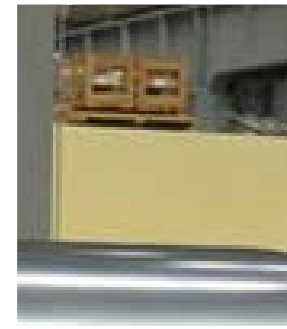
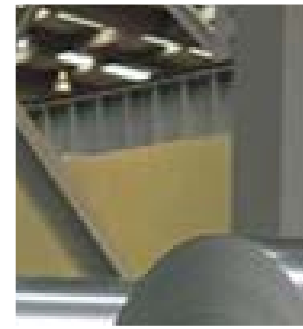
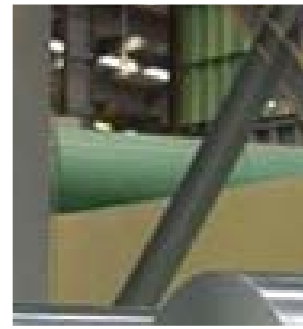
SHEET / PLATES / COILS

PLATE: ST12, ST13, ST14, ST37, RST37-2, ST52, A516 Gr.60-Gr.70

A283 Gr.C

PLATE: A182 - 304, 310, 316, 320, 321

PLATE CHECKERED



STRUCTURAL STEEL

IPE, UNP, HEB, HEA,HEM,CHANNEL



 **Tenaris**

 **ORION**
Valves

ROSEMOUNT



HABERKORN
ULMER



3M

Dräger

WIKAL

KITZ



melesi

ULMA



arflu

INDUSTRIAL VALVES

VALVE

MSA

TUBOS REUNIDOS

TESCOM

Swagelok

ABB



BAFT

Parker Store



CMO

 **Sumitomo Corporation**

Honeywell



ArcelorMittal



rosenbauer



ANSU

FLUKE

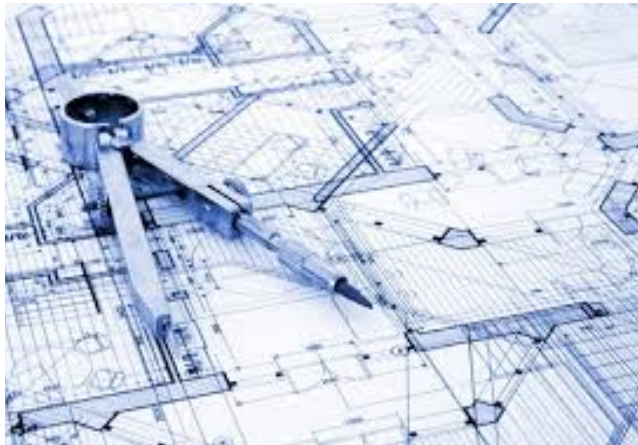
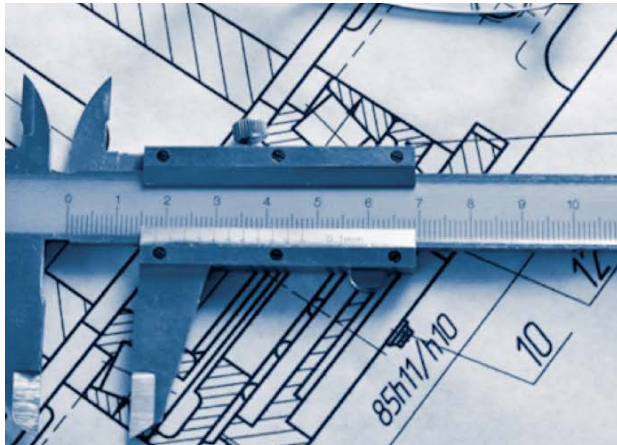
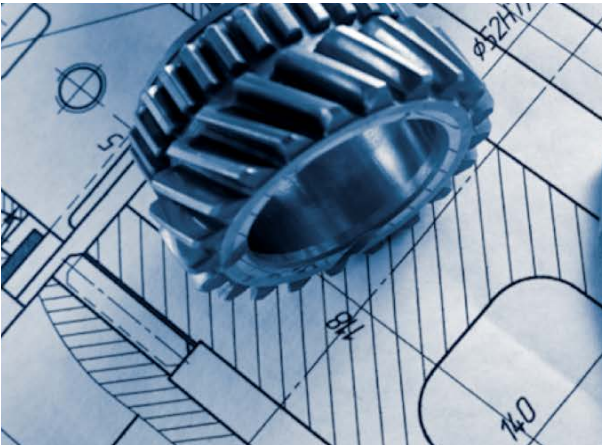
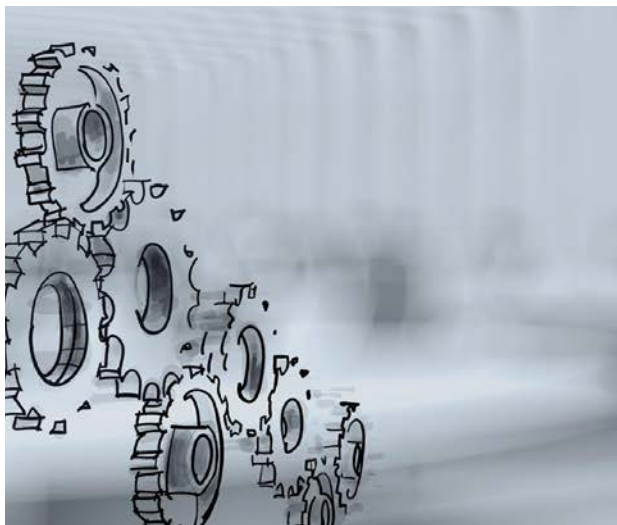
Authorized Distributor

INTERfit

BENKAN



Rexroth
Bosch Group





Head office: Unit 201, 2nd Floor, Aftab
Commercial Building, Moj Sq., Kashan St.,
West Hemat Highway, Tehran, Iran
Tell: +98 21 44746272
+98 21 44731731
+98 21 44739960

Shad abad branch : Unit No. 367, Block No.
23, 2nd BAHARAN Commercial Complex,
BAZAR-e AHANE-e SHAD ABAD, Tehran, Iran.
Tell: +98 21 66316091
+98 21 66316089
Fax: +98 21 66316162

Web: www.tep-co.co

Email: info@tep-co.co

